

Bracket S



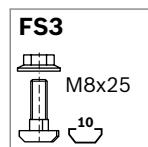
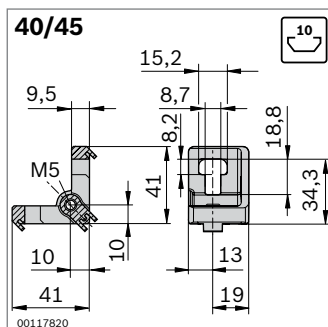
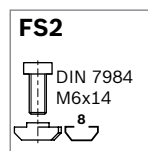
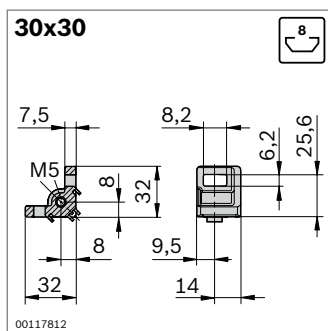
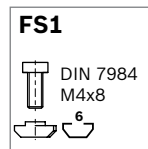
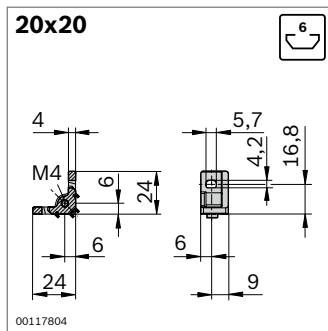
- ▶ Bracket with thread for virtually gap-free mounting of surface elements
- ▶ For subsequent installation in closed frame constructions
- ▶ The surface element can be mounted in different positions: flush with the profile edge or in front of the profile (by breaking off the centering lug)

Required accessories:

Screw for fastening the surface element

Optional accessories:

- ▶ Variofix S block (p. 7-7)
- ▶ Retainer ring (p. 7-9)



Bracket S	Slot	No.	FS
20x20	6	20	3 842 536 489
20x20 set	6	1	3 842 536 670 2xFS1

Material: Die-cast aluminum
Fastening material: steel; galvanized
Scope of delivery: set incl. fastening material (FS)

Bracket S	Slot	No.	FS
30x30	8	20	3 842 536 490
30x30 set	8	1	3 842 536 671 2xFS2

Material: Die-cast aluminum
Fastening material: steel; galvanized
Scope of delivery: set incl. fastening material (FS)

Bracket S	Slot	No.	FS
40/45	10	20	3 842 536 491
40/45 set	10	1	3 842 536 672 2xFS3

Material: Die-cast aluminum
Fastening material: steel; galvanized
Scope of delivery: set incl. fastening material (FS)